



**Planning your visit to
Access, Ideas & Insights:
Creative Partnerships & Pathways**

Visual Story

What is a Visual Story



Visual Story

A Visual Story is a helpful guide that combines images and text to assist you when you're in a new environment.

It's designed to make unfamiliar environments less intimidating and more familiar, so you can feel more at ease and less stressed.

This guide will give you all the information you need about the event, including an overview of what's planned and what to expect.

Wellbeing Through Art Event



Access, Ideas, and Insights, presented by Accessible Arts, is a free series of hybrid events. These events are focused on access and inclusion in the arts sector, through panel discussions.

The event will be held at the Art Gallery of NSW on Wednesday, 4th December. I can join either online or in-person. To attend I must register for a ticket here: [Free Ticket Registration](#)

The theme for the event is: **Creative Partnerships & Pathways**

Access Ideas and Insights: Creative Partnerships & Pathways



The panel will explore how to connect with community and discover the latest programs and pathways supporting exciting creative and career development opportunities for artists with disability or who are d/Deaf.

Panel members include:

- Danielle Gullotta - Senior Access Producer, AGNSW
- Emmanuel Asante - We Are Studios Artist
- Kerri Glasscock - CEO & Festival Director, Sydney Fringe
- Jeremy Lowrenčev - Producer for Limitless, Sydney Fringe
- Justine Shih Pearson, CEO and Executive Director, PACT

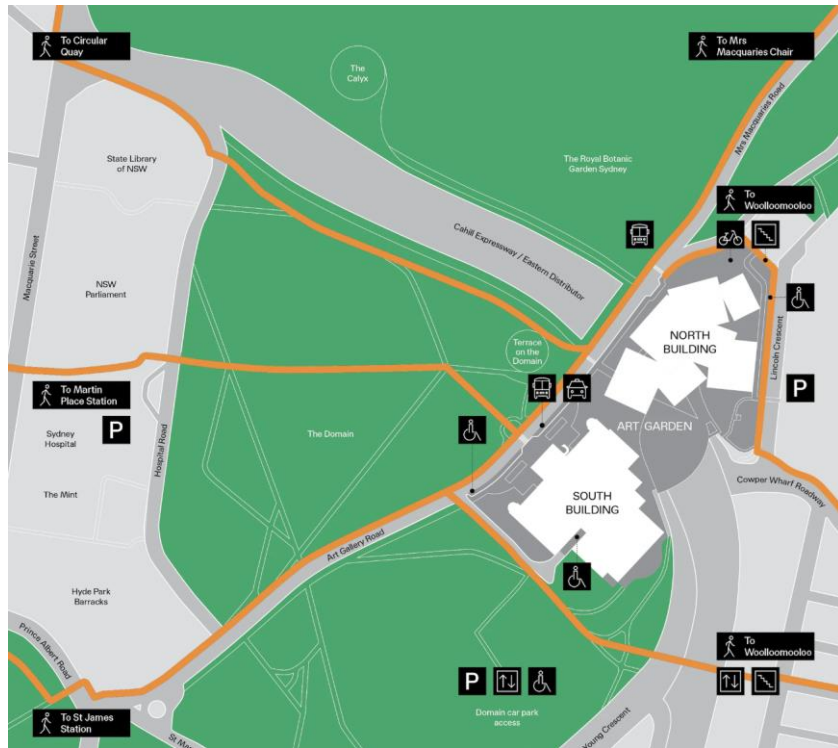
Art After Hours



Every Wednesday night, the Art Gallery of New South Wales stays open until 10pm. This is called Art After Hours. I can find more about the program by clicking here: [Art After Hours](#)

The Art After Hours program will be sensory-friendly. This means there will be reduced sensory stimuli, no public announcements and gentler light throughout the gallery.

Planning Your Visit



The event will be held at the Art Gallery of New South Wales - Art Gallery Road, The Domain, Sydney.

Public transport

Bus 441: Departs from the York Street side of Queen Victoria Building and drops off near the AGNSW.

Train: St James and Martin Place stations are both about 10min walk.

There are three dedicated accessible parking spaces onsite. To find out more about visiting click here: [Getting here](#)

Art Gallery of New South Wales



The Art Gallery of New South Wales has two main buildings:

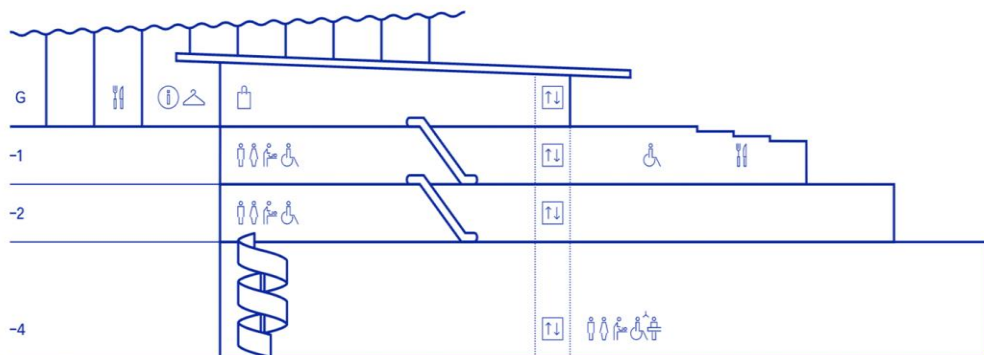
- Naala Badu - north building
- Naala Nura - south building

The Wellbeing Through Art event will be held in Meers Hall. Located on Lower Level 2, Naala Badu.

I can find out more about the Art Gallery of New South Wales by clicking here: [Plan your visit](#)

Map of the North Building

North Building



This is a map of the Naala Badu precinct which shows the locations of the amenities.

There are different free and paid art exhibitions on each level. More exhibitions are available in the Naala Nura.

I can find out more about the venue and the exhibition spaces here: [Venue Map](#)

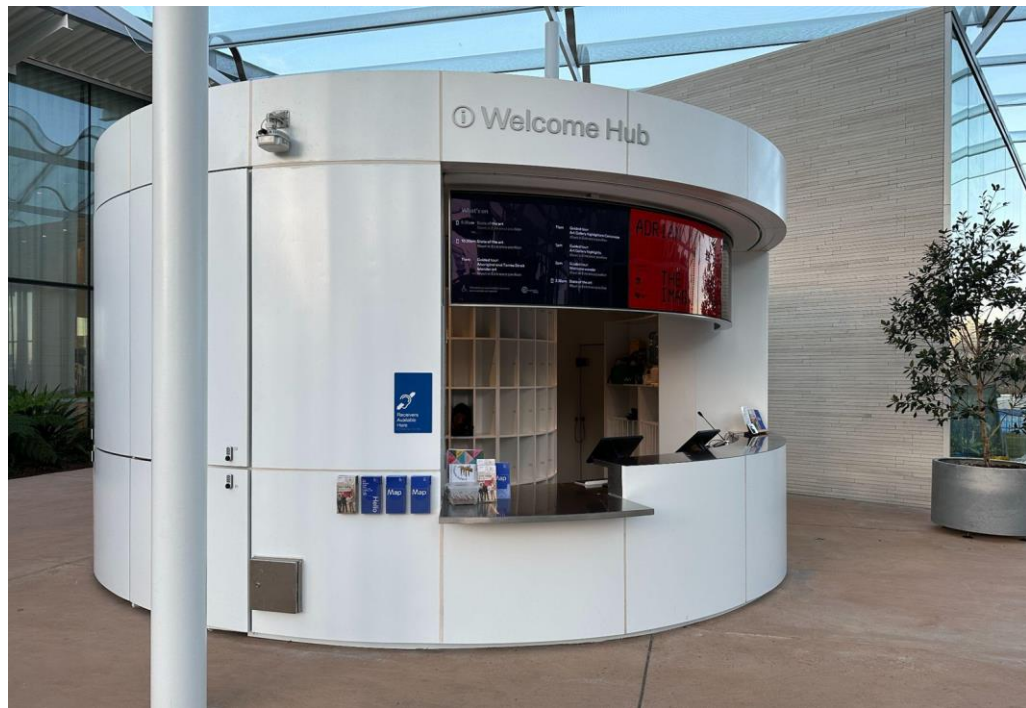
Welcome Plaza



The main entrance to the Naala Badu is situated on Art Gallery Road and can be accessed through the Welcome Plaza.

Once I arrive at the entrance, I will see glass doors that open and close automatically. I can also locate the Welcome Hub next to the entrance for further assistance.

Welcome Hub



At the entrance of the Naala Badu, I can find the Welcome Hub. This is where I can cloak my bag and can ask for a gallery map.

If I need a wheelchair or mobility scooter, I can book this free service at the Welcome Hub. I will be asked for my ID when booking.

At the end of my visit, I must return the mobility aid to the Welcome Hub.

Art Gallery of New South Wales Hosts



The Art Gallery of New South Wales hosts will be working throughout the gallery. I can identify them by their blue shirts with the word Welcome printed on the front.

I can ask the hosts for information about the exhibitions, where to find different facilities and for help with first aid.

Getting to Meers Hall



Once I have entered the Naala Buda, I will arrive at a large foyer. I can take the elevators located straight across from the entrance or the escalators down to Lower Level 2.

The first set of escalators will take me down to Lower Level 1. There is a second set of escalators located near the restaurant which will take me down to the Lower Level 2.

Getting to Meers Hall



Lower Level 2 is made up of a large open atrium space with adjoining exhibition galleries.

On the opposite end from the escalators across the atrium I can find Meers Hall.

All public areas inside the gallery can be accessed via ramps, lifts, stairs and elevators.

Meers Hall



At the entrance to Meers Hall I will be greeted by Accessible Arts staff who will be wearing a pink lanyard with their name on it.

Inside the event space I will see a stage and chairs set up in rows. I can choose to sit anywhere I want except for chairs with a reserved sign on them.

The doors will open for the event at 5:15pm.

Event start times and refreshments

The doors to the event open at 5:15pm. The event will start at 6:30pm with a Welcome to Country.

Following the Welcome to Country, a panel discussion featuring four speakers and an MC will take place on stage. The panel discussion will last for 45mins concluding with 15min audience Q&A session where I can ask a question to the panellists. Questions will be welcomed from both the online and in-person audience.

Free drinks and light refreshments will be provided in Meers Hall from 6:45pm to 7:15pm.

During the event there will be a photographer taking photos, as well as audio and video equipment as the event is being live streamed.

Access at Wellbeing Through Art



The event will be Auslan interpreted and live captioned.

If I need an accessible seat, I can approach the Art Gallery of New South Wales hosts, and they will be help me find one.

If I want to ask about specific access requirements before the event, I can reach out to the Accessible Arts team by clicking here: [Contact Us](#)

Public Toilets



Accessible toilets, parents and carers rooms are located on Lower Levels 1 and 2 in Naala Badu.

The closest toilets to Meers Hall are on the opposite side of the Lower Level 2 atrium behind the escalators.

I can ask the Art Gallery of New South Wales hosts to help me find them.

Food and Drink



I can find restaurants in both in the Naala Badu & Naala Nura.

During the evening MOD Restaurant located in Naala Badu on Lower Level 1 and the Gallery Restaurant and Café in Naala Nura are open: [Food & Drink](#)

Food and drinks are not permitted in the exhibition spaces.

Leaving the event



When the event finishes, I can explore the exhibitions at the Art Gallery of New South Wales.

To exit, I can return to the main entrance on the Ground Level which leads out to the Welcome Plaza.

I can find out more information about the Art Gallery of New South Wales by clicking here:

[AGNSW](#)