

# Planning your visit to Access Ideas and Insights: Build Your Audience at Bell Shakespeare

## Visual Story



BELL  
SHAKESPEARE.

# What is a visual story?

A Visual Story is a visual & written accessible guide to assist you with your visit.

Visual stories are used to prepare a person for and increase the predictability of a new environment or situation. This helps bring familiarity to a process and to reduce anxiety and stress.

This guide provides information on how to access the Access Ideas and Insights at Bell Shakespeare, and what to expect when you arrive and who to ask for assistance.

# How to get to Bell Shakespeare

The Build Your Audience event will be held in The Seed at Bell Shakespeare.

Located at: Pier 2/3, Walsh Bay Arts Precinct, 1/13a Hickson Road, Dawes Point, Sydney NSW 2000, Australia

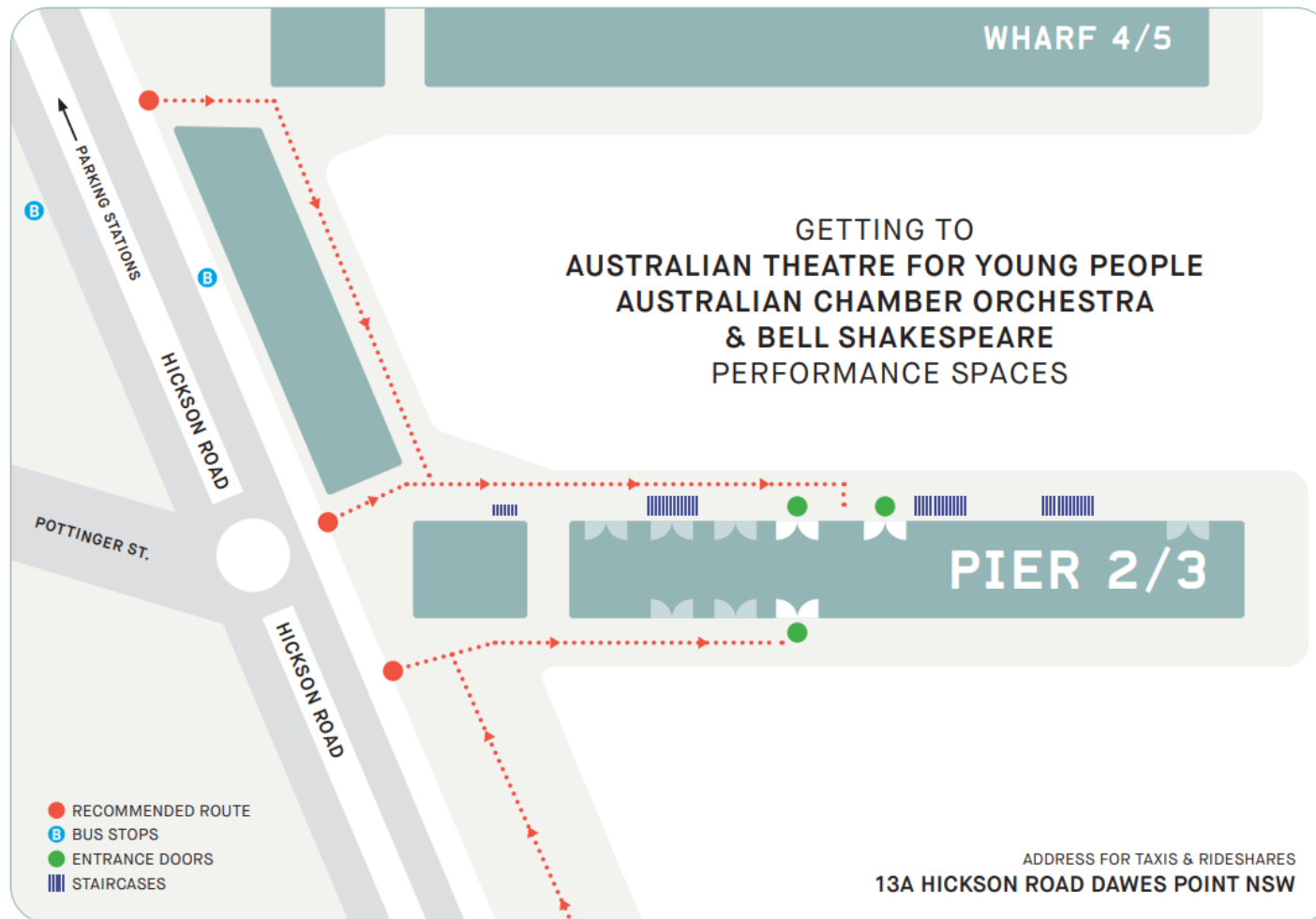
## Public transport to Bell Shakespeare:

- **Bus routes 324 & 325:** Departs from outside Woolworths at Town Hall and drops off at the entry to Pier 2/3. Returns to Town Hall, picking up on opposite side of the road to the Pier.
- **Train:** Circular Quay and Wynyard are a 15 and 20 min walk from the venue. The direct routes from these transport hubs include significant stairs.

## Car parking

There is metered parking available on Hickson Rd, Pottinger St and Lower Fort St. Paid off-street parking can be found at nearby Interpark and Wilson carparks.

# Pier 2/3 access map



Here is a map of the of the Pier 2/3 precinct which shows the locations of the entrance, bus stops and staircases. You can find in red the recommended route to access The Seed at Bell Shakespeare

For details on getting to the venue you can visit the Bell Shakespeare website: [Bell Shakespeare](https://www.bellshakespeare.com.au/)

# Getting to The Seed, Bell Shakespeare

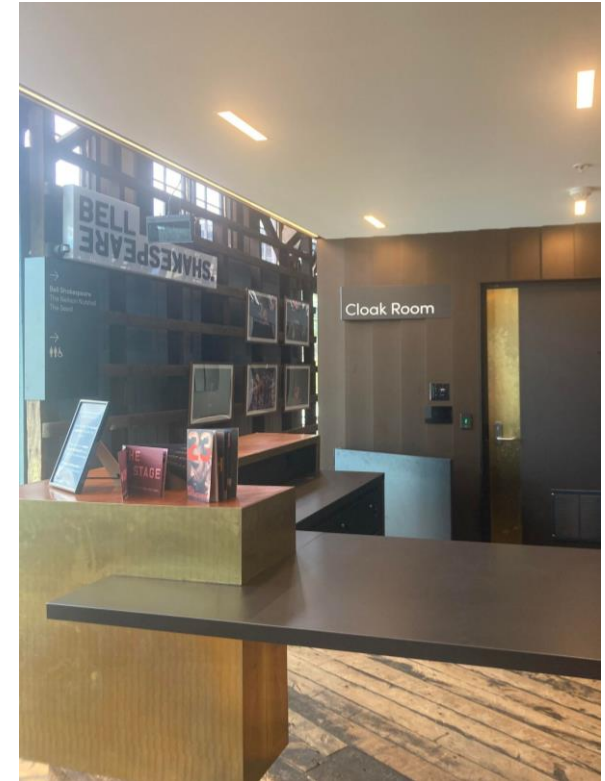
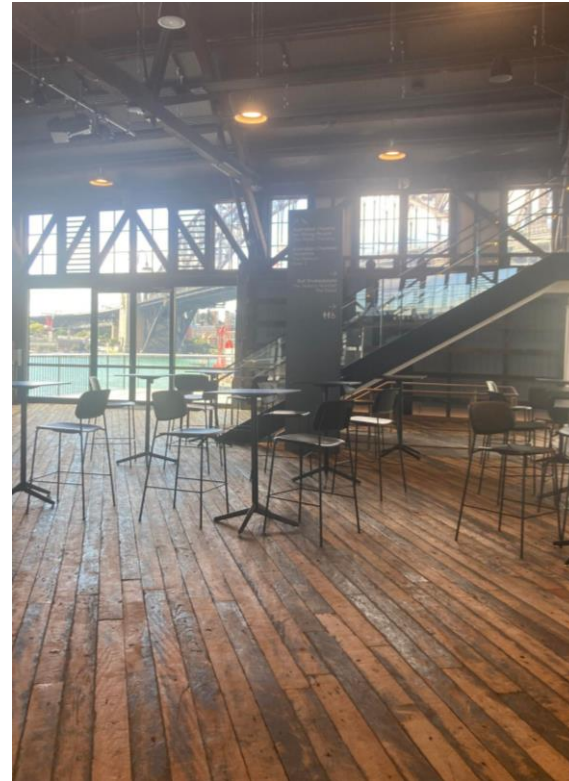
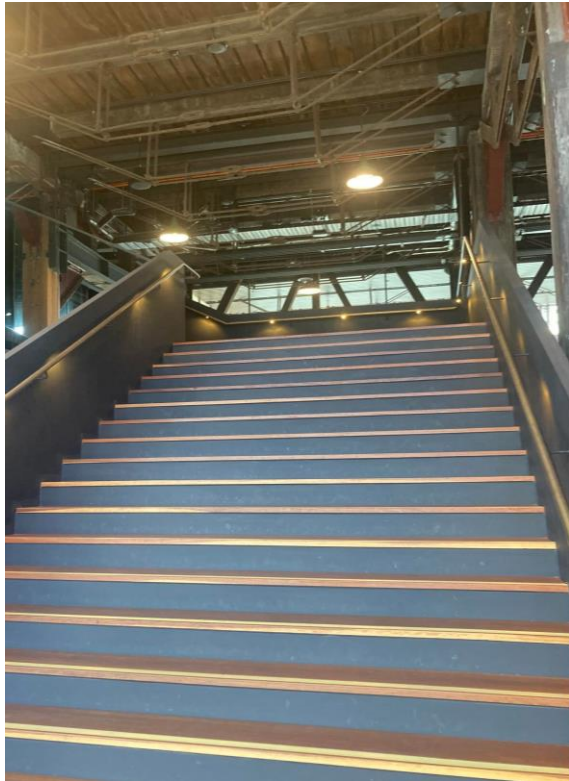
When you arrive via Hickson Rd, you will proceed down the pier on either side and enter the Shared Foyer via the glass doors marked Bell Shakespeare performance spaces. These doors are approximately halfway along the Pier and will already be open. For a video walk through of our spaces, you can watch [this video](#)



# Shared Foyer

The Seed is located on Level 1 accessed by the Shared Foyer. You can move up two flights of wide stairs to reach Level 1 or take the elevator located next to the staircase.

Entrance to The Seed is via a wide corridor to the left of the bar. The cloakroom is located on Level 1 at the far-left side of the bar.



# Staff and public bathrooms

Public, accessible bathrooms are found on Ground level, behind the lifts and on Level 1 in the corridor that leads to the entrance of The Seed.

There will be light music playing in the foyer. There will be water freely available at the bar, even if it is closed. Staff available to help will be wearing Bell Shakespeare and Accessible Arts lanyards.



# Checking in and seating access



Photo Clare Hawley

Seating in The Seed will be general admission floor-level seating. There are no stairs or steps between the elevators and entry to the Seed.

The 'Access Ideas and Insights: Build your audience' is a free event. Your name will check upon entry to The Seed.

Please approach Bell Shakespeare or Accessible Arts Staff for assistance should you need accessible seating.

This event will be Auslan interpreted, open captioned and is wheelchair accessible.



# Start times and morning tea

The event will open at 10.15am with complimentary morning tea provided. There will be gluten and dairy free options available.

The panel discussion will start at 11am and finish at around 12pm.

The panelists include Olivia Ansell, James Winter, Janelle Ryan and facilitated by James Evans. There will be audio and video equipment in the room, as the event is being live streamed.



# Leaving the event and Pier 2/3

When the event finishes, you will leave the venue in the same way you arrived. You will move down the corridor, back down to ground floor via the stairs or lift, out onto the pier and then on to Hickson Rd.

You can explore the Walsh Bay Arts Precinct, enjoy a coffee nearby and enjoy Sydney Harbour. You can find out more about Bell Shakespeare events: [here](#)



Photo Brett Boardman